



2900 Aluminum Series

Premium Sliding Patio Door



Polyamide strut
thermal break system

All framing constructed
with double thermal breaks

Double and 1^{3/8}"
triple-glazing options

Heavy duty tubular
meeting rails

Pressure equalized
sill design

ENERGY STAR® rated
for Zone 2 in Canada

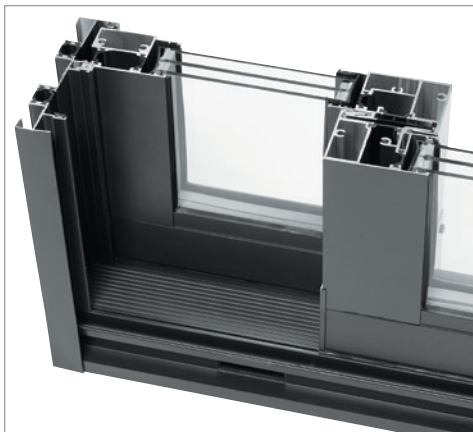
EFFICIENCY. QUALITY. HIGH VALUE.

2900 Aluminum Series

The 2900 Aluminum Series Thermal Door

Innovative **2900 Aluminum Series** patio doors offer superior thermal and structural advantages. They provide a level of performance unparalleled in aluminum sliding doors. Enjoy lower maintenance with Sunview engineered quality, styling and beauty. Plus, enhanced insulation helps conserve energy and helps your heating bills in cold weather. Aluminum doors also play a vital role in controlling temperatures in the summer.

Choose the **2900 Aluminum Series** Thermal Patio Door for strength, lasting value, improved thermal technology, and a wide range of flexible configurations.



Features and Options

2900 Performance

Argon filled, Triple-glazed Low-E achieves a U-factor of 1.42 W/m²·K (0.25 Btu/hr·ft²·°F)

Meets Zone 2 ENERGY STAR® rating in Canada

Meets NAFS deflection and structural requirements at CW-PG40 performance grade level

Provides water resistance at 580 Pa (12 psf)

Insulating Glass

One-inch clear tempered sealed insulating glass, or upgrades to triple-glazed 13/8" argon-filled Low-E coated glass for greater energy performance and cold climate condensation resistance. Colour tinted or reflective glass meets the most demanding architectural specifications.

Super Spacer®



Hardware Options

Stylish white or black contemporary handles with a single-point lock come standard. Optional twin-point key locks, and a satin nickel handle finish are also available.



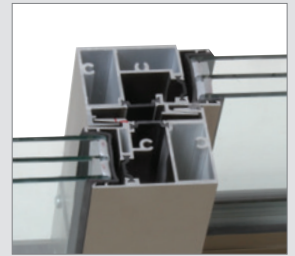
White Finish



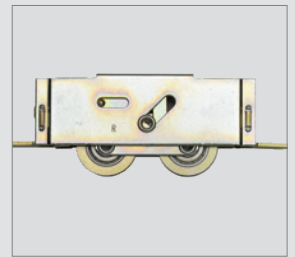
Satin Nickel (Optional)



Black Finish

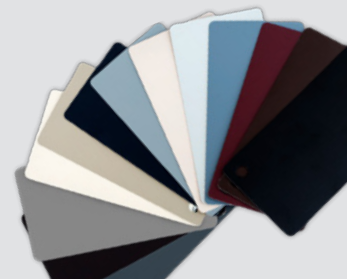


Interlock System features wide meeting rails with double weather stripping for excellent water and air tightness.



Precision Adjustable Rollers are whisper quiet and high-quality adjustable rollers installed in the active panel.

Optional Exterior Colours Sunview's patio doors boast a wide range of exterior colour options that feature a durable finish that is also UV stable.

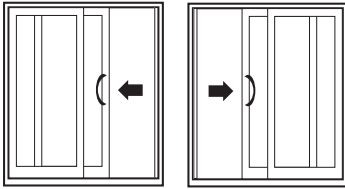




2900 Aluminum Series

Dimensions Door/Panel Configurations and Finished Sizes (Exterior view)

2 Panels

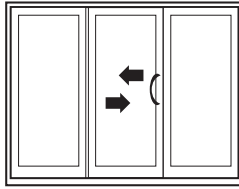


OX-Slide Left

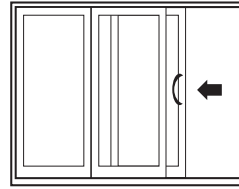
XO-Slide Right

Product Code	Frame Size
50610	58 ¹ / ₄ × 80 ³ / ₈
60610	70 ¹ / ₄ × 80 ³ / ₈
80610	94 ¹ / ₄ × 80 ³ / ₈

3 Panels



OXO-Slide R to L or OZO-Slide L to R

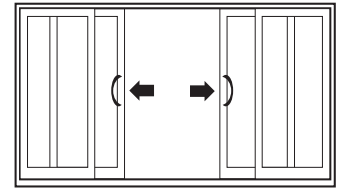


XOO-Slide R or OOX Slide L

Product Code	Frame Size
76610	86 ³ / ₄ × 80 ³ / ₈
90610	104 ³ / ₄ × 80 ³ / ₈
120610	140 ³ / ₄ × 80 ³ / ₈

Product Code	Frame Size
76610	87 ¹ / ₈ × 80 ³ / ₈
90610	105 ¹ / ₈ × 80 ³ / ₈
120610	141 ¹ / ₈ × 80 ³ / ₈

4 Panels



OXXO-Slide R and Slide L from Centre

Product Code	Frame Size
100610	115 ¹ / ₄ × 80 ³ / ₈
120610	139 ¹ / ₄ × 80 ³ / ₈
160610	187 ¹ / ₄ × 80 ³ / ₈

Performance 2900 Series Patio Door meets NAFS/Class CW-PG40 Type SD

Standard	Air Leakage	Water Penetration Resistance	Design Pressure
AAMA/WDMA/CSA 101/1.S.2/A440-11 and A440S1-09	A3 - 0.1 L/s·m ²	580 Pa (12 psf)	±1920 Pa (40 psf)

Distributed by:



Our products meet the ENERGY STAR® program guidelines to help protect the environment through superior energy efficiency.